



SMOBio[®]

Small Bio, Smart Tool

www.smobio.com

Product Information

AccuBand™ series

AccuBand™ 100 bp+3K DNA

Ladder II, Ready to Use

DM2400 **54.4 µg / 500 µl**

Size: 500 µl

5 µl per well for 100 gel applications

Storage

Room temperature for 6 months

4°C for 12 months

-20°C for 36 months

Features:

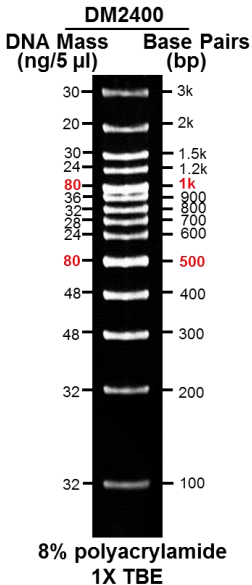
1. Stable at room temperature for 6 months
2. It is suitable for agarose and polyacrylamide gel.

Description

AccuBand™ 100 bp+3K DNA Ladder II is composed of 14 individual DNA fragments, presenting 3k, 2k, 1.5k, 1.2k, **1k**, 900, 800, 700 600, **500**, 400, 300, 200 and 100 bp sharp bands respectively. This product contains 2 enhanced bands (1k and 500 bp) for easy band identification. AccuBand™ 100 bp+3K DNA Ladder II is ready-to-use, containing loading buffer with dual color tracking dyes (orange G and Xylene cyanol FF). AccuBand™ 100 bp+3K DNA Ladder II provides a sufficient amount of DNA for clear observation of all DNA bands ranging from 100 bp to 3 kb, either in agarose gel or in polyacrylamide gel electrophoresis.

Buffering

10 mM Tris-HCl (pH 8.0), 10 mM Na-EDTA, 0.025% Orange G, 0.005% Xylene cyanol FF and 10% Glycerol.



Note: This DNA Ladder was not designed for precise quantification of DNA mass, but can be used for approximating the mass of DNA by intensity comparison.

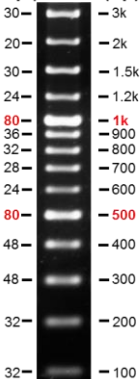


SMOBio[®]
Small Bio, Smart Tool

AccuBand™ 100 bp+3K DNA ladder II

DM2400

DNA Mass (ng/5 μ l) **Base Pairs (bp)**



2% agarose gel
0.5X TAE



The ladder is supplied with the gel loading buffer and is ready to use. Do not heat or dilute before loading.

P06-F11-A1

Quality Control

1. 14 defined bands are observed during electrophoresis in agarose gel.
2. No nuclease activity is detected by a direct nuclease activity assay.

Other information

SMOBIO Technology, Inc. claims all warranties with respect to this document, expressed or implied, including but not limited to those of merchantability or fitness for a particular purpose. In no event shall SMOBIO Technology, Inc. be liable, whether in contract, tort, warranty, or under any statute or any other basis for special, incidental, indirect, punitive, multiple or consequential damages in connection with or arising from this document, including but not limited to the use thereof.

Caution: Not intended for human or animal diagnostic or therapeutic uses.

Related Products

DM2000	AccuBand 100 bp DNA Marker II, 500 μ l
DM2200	AccuBand 100 bp DNA Ladder II, 500 μ l
DM2300	ExcelBand 100 bp+3K DNA Ladder, 500 μ l
DM3100	ExcelBand 1 KB (0.25-10 kb) DNA Ladder, 500 μ l
DM4100	ExcelBand XL 25 kb DNA Ladder, Broad Range (up to 25 kb), 500 μ l
PM2610	ExcelBand Enhanced 3-color High Range Protein Marker, 250 μ l \times 2
PM2800	ExcelBand 3-color Extra Range Protein Marker, 250 μ l \times 2
WM1000	YesBlot Western Marker I, 250 μ l
TP1200	ExcelTaq 5 \times PCR Master Dye Mix, 200 RXN
TF1000	SMO-HiFi DNA Polymerase, 100 U
RP1000	ExcelRT Reverse Transcriptase, 20,000 U
DL5000	FluoroDye DNA Fluorescent Loading Dye (Green, 6X), 1 ml
DS1000	FluoroStain DNA Fluorescent Staining Dye (Green, 10,000X), 500 μ l
NS1000	FluoroVue Nucleic Acid Gel Stain (10,000X), 500 μ l
CV1100	GetClone PCR Cloning Vector II, 20 RXN
CK1000	Champion E. coli Transformation Kit
VE0100	B-BOX™ Blue Light LED epi-illuminator



B-BOX™ Blue Light LED epi-illuminator

The latest version of the manual can be downloaded from www.smobio.com/shop.

For research use only
2023 ver. 2.3.0

P06-F11-A1